



MUSTEE

Preferred by the "Pros"

CareGiver® Model 390 Series 1-1/4" T-Style Safety Grab Bars



Design features:

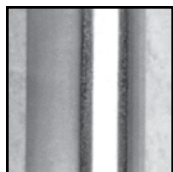
- Smooth stainless steel, 18 gauge tubing, satin finish, 1-1/4" diameter
- Exclusive, Twist-Lock concealed flange snaps into place for a secure, tamper-proof mounting
- Stainless steel mounting flange is Heliarc welded to the tube to form a single, high strength structural unit that cannot be separated
- All bars have a nominal offset distance of 1-1/2" (38mm)
- Flat contact surface won't cut or mar wall surfaces – bar remains stable without further tightening
- 304 Stainless steel mounting flange
- Tested to withstand 500 lbs. of downward load...when properly installed

Code Accepted

CareGiver® Grab Bars meet or exceed performance requirements:

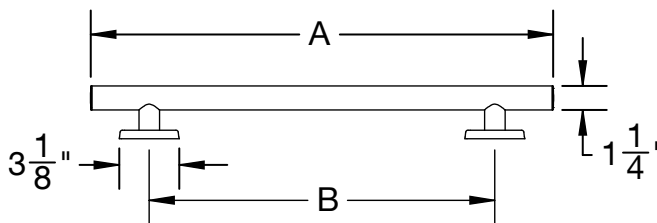
- American National Standards Institute (ANSI) A117.1
- Meets or exceeds HUD, FHA, VA, ADA and other Federal/local codes

Specifications:



Smooth finish

Model No.	Length		UPC
	A	B	
390.323	24"	18"	6 71031 00554 0
390.324	36"	30"	6 71031 00555 7



General: Furnish and install as shown on plans, T-Style Safety Grab Bar model _____, as provided by E.L. Mustee & Sons, Inc. measuring _____" long with Twist-Lock concealed flange shall be 1-1/4" diameter, 18 gauge, type 304 stainless steel tubing. 14 gauge stainless steel mounting flange shall be Heliarc welded to the tube to form a single structural unit. Grab bar shall comply with applicable building codes. Meets ANSI A117.1



MUSTEE

E.L. Mustee & Sons, Inc. • 5431 West 164th Street • Brook Park, OH 44142 • Phone: 216.267.3100 • Fax: 216.267.9997
E-mail: info@mustee.com • Web: www.mustee.com • Proudly made in the USA

Notice: Our continuous commitment to product improvement may result in changes to product specifications without notice.
Patents pending. Made and Printed in U.S.A.