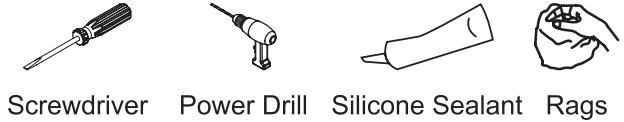




PIONEER INDUSTRIES, INC.
 3325 S. Garfield Ave.
 Commerce, CA 90040
 (800) 338-9468
 www.pioneerind.com

INSTALLATION

Tools:



Model Number: 3MT800, 4MT840

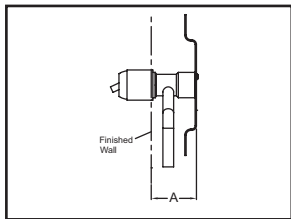


Warnings and Notes:

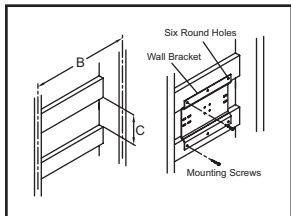
Check with local plumbing code requirements before installation.
 This product should be installed by a local listed plumber.
Do not use plumbers putty on threads.

Installation Steps:

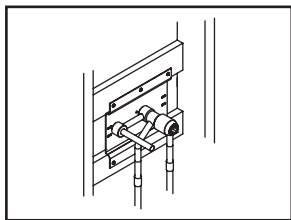
Single Handle Lavatory Wall Mount Vessel Filler



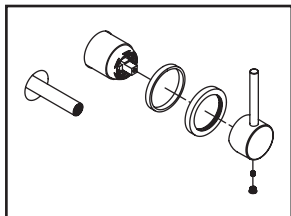
Note* :- The wall bracket requires special framing and support considerations. Please pay special attention to minimum and maximum dimension recommendations noted.
 (1) Refer to recommended installation distance, improper installation may result in performance and aesthetic issues with the product. ※ "A" installation distance: 2 5/8" Min to 3 5/8" Max.



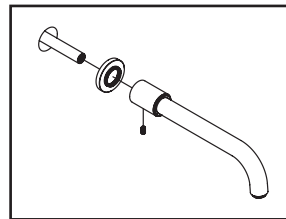
(2) A suggested framing example is shown. Each installation may have different framing requirements than shown. Construct the framing for your installation.
 ※ "B" framing distance: 16"
 ※ "C" framing distance: 5 3/8"



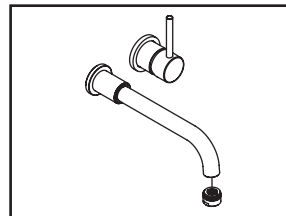
(3) Attach the wall bracket to the framing with six mounting screws provided with the wall bracket. Verify that the installation is correct and leveled. Also verify the wall bracket is firmly secured to the framing.



(4) Slide valve escutcheon through valve sleeve against the finished wall, attach handle to the cartridge and tighten with Allen screw, put hole cover on the handle.



(5) Push spout escutcheon with gasket and spout through the spout shank against the finished wall then tighten the Allen screw on the spout. Use silicon to caulk around valve escutcheon and spout escutcheon to form water tight seal.

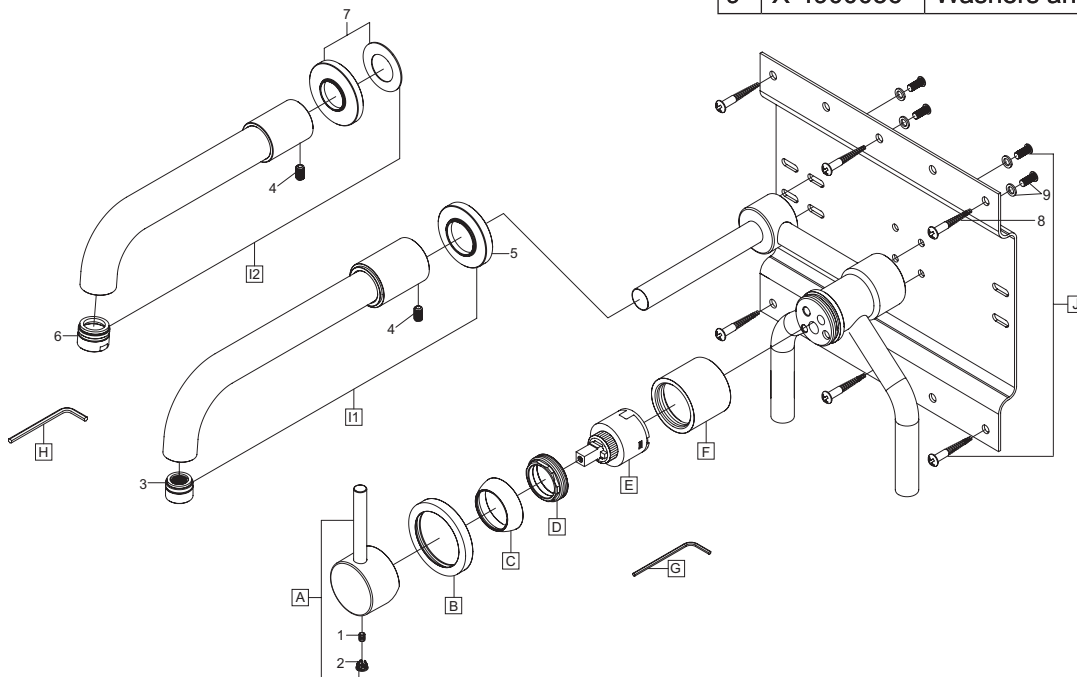


(6) Important: After installation is complete, remove aerator. Turn water supplies on and allow both hot and cold water to run at least one minute each. While water is running, check for leaks. Turn off water and replace aerator.

Exploded Drawing :

* Note: Please specify finish/color when ordering.

	ITEM #	DESCRIPTION
A	X-1900008*	Motegi Lever Handle
B	X-4900052*	Valve Escutcheon
C	X-4900017*	Cap
D	X-4900018	Retainer Nut
E	X-3900001	Ceramic Disc Cartridge
F	X-4200091*	Valve Sleeve
G	X-4900024	3/32" Allen Wrench
H	X-4900026	1/8" Allen Wrench
I1	X-2300023*	Motegi Bent Nose Spout (For 3MT800)
I2	X-2400021*	Motegi Bent Nose Spout (For 4MT840)
J	X-4900054	Mounting Bracket With Screws
1	X-4900002	3/32" Allen Screw
2	X-4900044*	Hole Cover
3	OP-490063*	1.2 GPM Aerator (For 3MT800)
4	X-4400001	1/8" Allen Screw
5	X-4300029*	Spout Escutcheon (For 3MT800)
6	X-4400042*	Flow Streamer (For 4MT840)
7	X-4400040*	Spout Escutcheon & Gasket (For 4MT840)
8	X-4900055	Mounting Bracket Screws
9	X-4900056	Washers and Bolts



For more care information or trouble shooting inquiries about your Pioneer product, please call:
Pioneer Industries, Inc. (800) 338-9468
 Monday-Friday 8 AM to 8 PM EST (5 AM to 5 PM PST)
www.pioneerind.com