



PIONEER INDUSTRIES, INC.
 3325 S. Garfield Ave.
 Commerce, CA 90040
 (800) 338-9468
 www.pioneerind.com

INSTALLATION

Tools:



Screwdriver



Power Drill



Silicone Sealant



Rags



Model Number: 4MT600

Warnings and Notes:

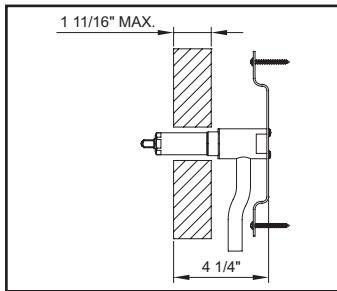
Check with local plumbing code requirements before installation.

This product should be installed by a local listed plumber.

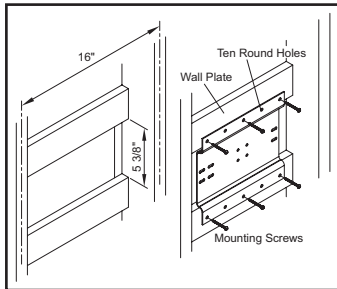
Do not use plumbers putty on threads.

Installation Steps:

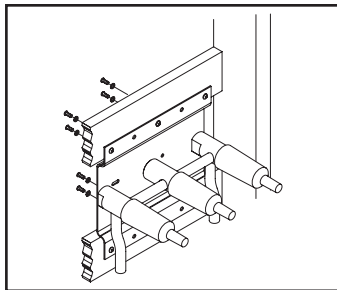
Two Handle Wall Mount Roman Tub Set



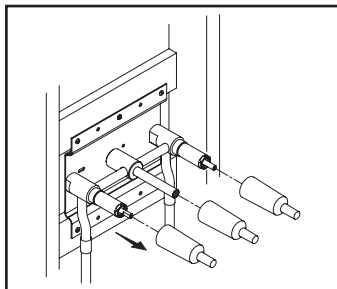
Note :- The wall bracket requires special framing and support considerations. Please pay special attention to minimum and maximum dimension recommendations noted.
 (1) Refer to recommended installation distance, improper installation may result in performance and aesthetic issues with the product.



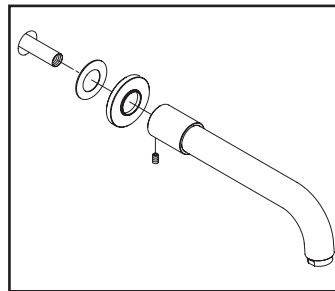
(2) A suggested framing example is shown. Each installation may have different framing requirements than shown. Construct the framing for your installation.



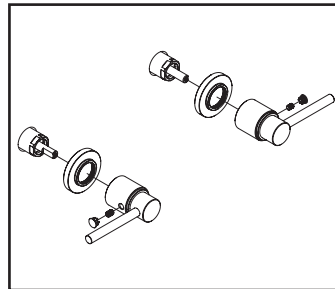
(3) Attach the wall bracket to the framing with six mounting screws provided with the wall bracket. Verify that the installation is correct and leveled. Also verify the wall bracket is firmly secured to the framing.



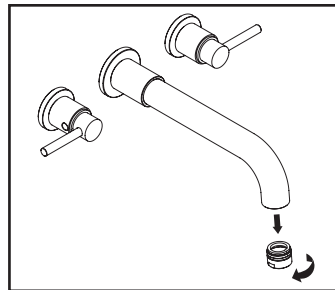
(4) Connect water supply lines to faucet inlet tube. If using copper pipe, please remove both hot and cold side stems before soldering the pipes. Reinstall both hot and cold side stems after soldering the pipes. Turn on both stems to flush the system and check for any leaks. Please put the protection tube on the rough-in valve if the finished wall is not done yet.



(5) When the finished wall is done. With spout escutcheon and gasket in the back, push spout and escutcheon through spout shank against the finished wall then tighten the Allen screw on the spout. Use silicon to caulk around valve escutcheon and spout escutcheon to form water tight seal.



(6) Slide valve escutcheon through valve sleeve, attach hot and cold handles to the cartridge and tighten with Allen screw, put hole cover on both handles.

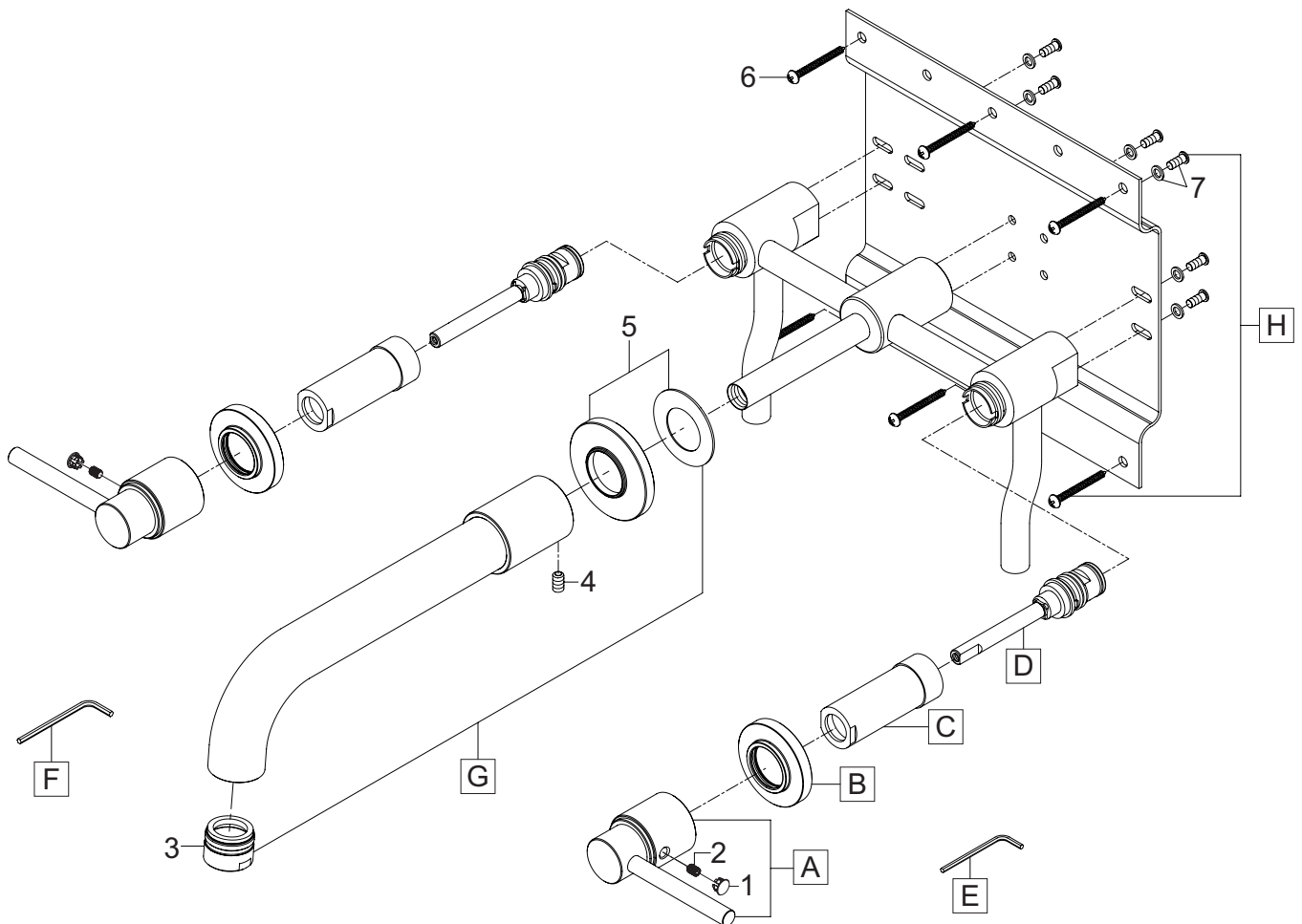


(7) Important: After installation is complete, remove the aerator. Turn on the water and allow both hot and cold water to run for at least one minute each. While water is running, check for leaks. Turn off the water and replace the aerator when finished.

Exploded Drawing :

* Note: Please specify finish/color when ordering.

	ITEM #	DESCRIPTION
A	X-1300006*	Motegi Lever Handle
B	X-4300026*	Valve Escutcheon
C	X-4300027*	Valve Sleeve
D	X-3300005C,H	Ceramic Cartridge-C, H
E	X-4900024	3/32" Allen Wrench
F	X-4900026	1/8" Allen Wrench
G	X-2400021*	Motegi Bent Nose Spout
H	X-4900054	Mounting Bracket With Screws
1	X-4900044*	Hole Cover
2	X-4900002	3/32" Allen Screw
3	X-4400042*	Flow Streamer
4	X-4400001	1/8" Allen Screw
5	X-4400040*	Spout Escutcheon & Gasket
6	X-4900055	Mounting Bracket Screws
7	X-4900056	Washers and Bolts



For more care information or trouble shooting inquiries about your Pioneer product, please call:
Pioneer Industries, Inc. (800) 338-9468
 Monday-Friday 8AM to 8PM EST (5AM to 5PM PST)
www.pioneerind.com