

## Lura® Single Lever Vessel Faucet

### FEATURES:

---

- Aerated waterfall outlet 9-15/16" from base to spout
- Brass construction
- Lever handle
- Ceramic cartridge
- 1.2 gpm (4.5 L/min)
- 9/16"-24 (3/8 compression) supply connection
- Corrosion resistant finishes
- Coordinates with Lura Collection
- Water supply lines included
- Includes finish-matched push-pop drain

### STOCK FINISHES:

---



PC MB BBZ

### STANDARDS:

---

- ASME A112.18.1/CSA B125.1 certified
- NSF/ANSI 61 certified
- NSF 372 certified
- WaterSense certified

### WARRANTY:

---

Visit [www.speakman.com](http://www.speakman.com) for full product warranty information

- 5 Year Limited Warranty (commercial)
- Limited Lifetime Warranty (residential)



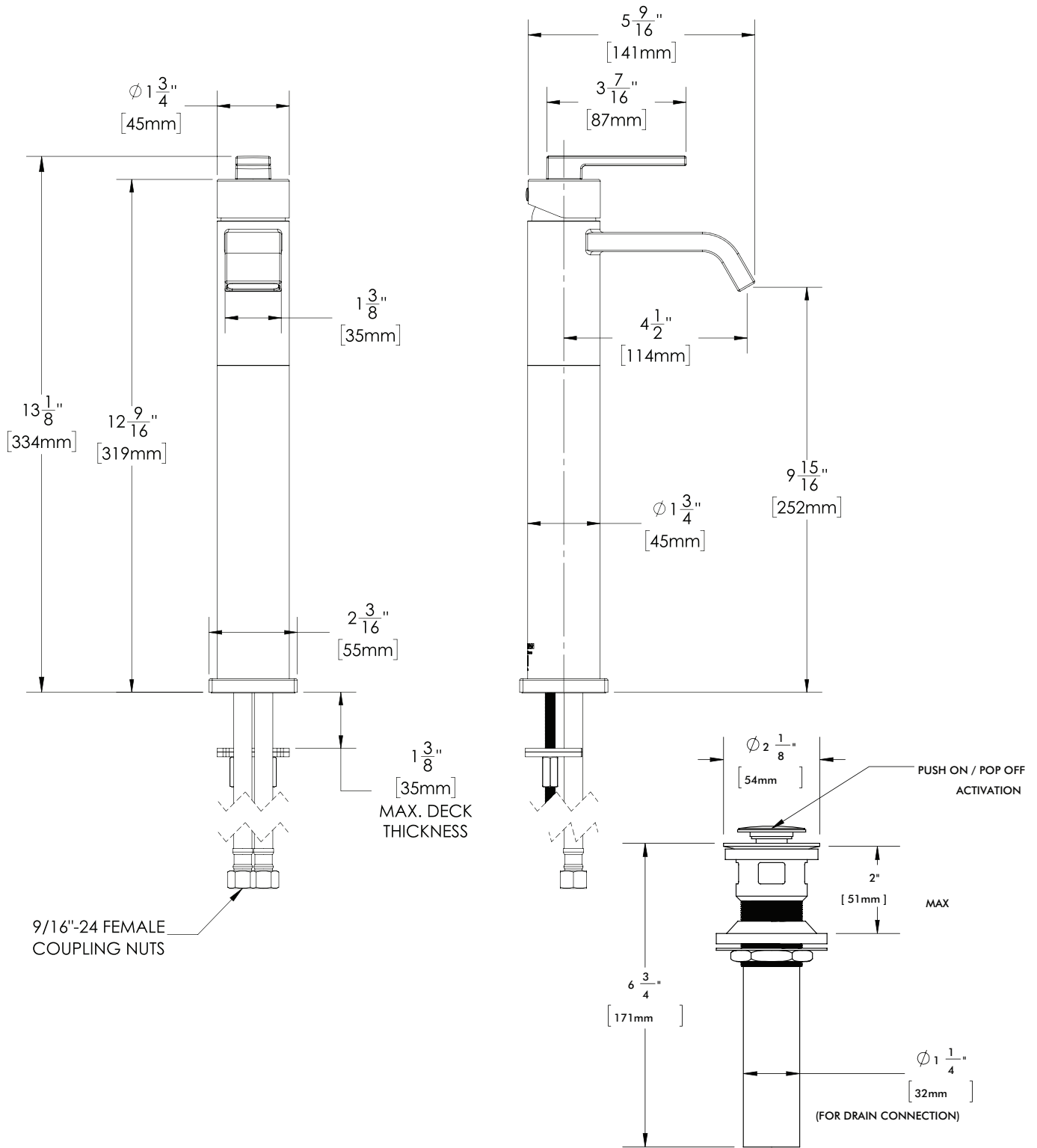
Information continues on next page

All dimensions are in inches (millimeters) unless otherwise specified and are subject to change without notice.

Architect/Engineer Approval Space:

P: 800-537-2107  
F: 800-977-2747  
W: WWW.SPEAKMAN.COM  
R: 01-MARCH 2020

## Lura® Single Lever Vessel Faucet



All dimensions are in inches (millimeters) unless otherwise specified and are subject to change without notice.

Architect/Engineer Approval Space:

P: 800-537-2107  
 F: 800-977-2747  
 W: WWW.SPEAKMAN.COM  
 R: 01-MARCH 2020