

POLYETHYLENE CTS ISOLATING DRIVE HOOK

» 556 SERIES

PickUp Talon™

ITEM # SUBMITTED	_____
JOB NAME	_____
LOCATION	_____
ENGINEER	_____
CONTRACTOR	_____
PO#	_____ TAG _____

SPECIFICATION

Sioux Chief 556 series PickUp Talon™ CTS pipe fasteners shall be used where necessary to secure CTS copper, PEX, or CPVC tube in piping systems. Fastener shall be 100% corrosion proof and U.V. resistant. Fastener shall be impact resistant to 0°F, and be able to withstand continuous temperatures up to 160°F. Fastener shall have a preloaded nail or screw which shall be rust resistant, zinc plated or stainless. Preloaded nail shall have a continuous rink shank to provide a more permanent installation. Fasteners shall protect tube from abrasive mounting surface and help to eliminate ticking noises. Fastener shall snap onto CTS tube for easy installation and shall allow for expansion and contraction of tube with less noise. Fastener shall be designed to avoid tube damage if nail or screw is over driven.

INSTALLATION

Manufacturer suggests that the PickUp Talon be installed in alternating directions (so that the fastener's nail or screw is on alternating sides of the tube being fastened to ensure secure installation). Install fasteners at intervals described in local plumbing code for the type of pipe or tube being fastened. To install IPS tube, use the next larger size fastener, e.g. if you are fastening 1/2" IPS tube, use a 3/4" fastener.

MATERIALS

Body: U.V. protected high density polyethylene

Nail: Zinc-coated ring shank

Screw: Zinc-plated corrosion resistant

#6 x 1 3/4" Phillips pan head, self-drilling tip (556-2S model only)

#6 x 2" Phillips pan head, self-drilling tip (556-3S model only)

#6 x 3" Phillips pan head, self-drilling tip (556-5S model only)

Hex-head screw: corrosion resistant, self-drilling tip

#6 x 1 1/2", 1/4" hex head (556-2HSDR only)

#8 x 1 3/4", 1/4" hex head (556-3HSDR only)

SAFE WORKING LOAD

556-1	556-2	556-3	556-4	556-5
9 lbs.	12 lbs.	16 lbs.	24 lbs.	25 lbs.

SAFE WORKING TEMPERATURE

Impact resistance to 0°F (18°C)

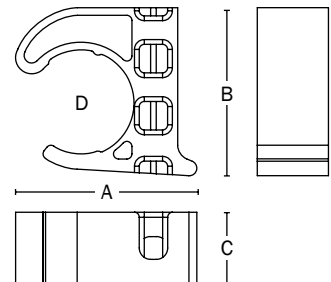
Maximum temperature: 160°F (71°C)

DIMENSIONS

	556-1	556-2	556-3	556-4	556-5
A: length	0.93"	1.12"	1.39"	1.82"	2.13"
B: height	0.828"	1.019"	1.378"	1.808"	2.26"
C: width	0.35"	0.38"	0.4"	0.45"	0.71"
D: nominal tube size	3/8"	1/2"	3/4"	1"	1 1/4"



556-2
Patent # 7,207,530



Made in USA

Create Item Number

556-AB

e.g. **556-2S**: 1/2" CTS PickUp Talon with screw

TUBE SIZE A

- 1 = 3/8" CTS
- 2 = 1/2" CTS
- 3 = 3/4" CTS
- 4 = 1" CTS
- 5 = 1 1/4" CTS

OTHER OPTION B

- _ = black body with nail
- C = ivory body with nail (for CPVC)*
- S = black body with screw*†
- HSDR = black body with hex-head screw*†‡

- *Not available on 3/8" CTS models
- †Not available on 1" CTS models
- ‡Not available on 1 1/4" CTS models