



# T&S BRASS AND BRONZE WORKS, INC.

2 Saddleback Cove / P.O. Box 1088  
Travelers Rest, SC 29690

Model No.

**005266-25**

Item No.

Travelers Rest, SC: 800-476-4103 • Simi Valley, CA: 800-423-0150 • Fax: 864-834-3518 • www.tsbrass.com

This Space for Architect/Engineer Approval

Job Name \_\_\_\_\_ Date \_\_\_\_\_

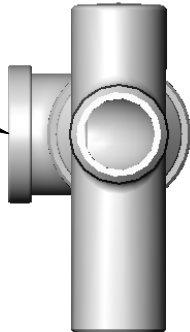
Model Specified \_\_\_\_\_ Quantity \_\_\_\_\_

Customer/Wholesaler \_\_\_\_\_

Contractor \_\_\_\_\_

Architect/Engineer \_\_\_\_\_

3/4" NPT  
Female Outlet  
Threads



3/4" NPT  
Male Inlet  
Threads

1/2" NPT  
Female  
Thermometer  
Threads



8 5/8"  
[219mm]

6 3/8"  
[161mm]

1 3/16"  
[29mm]

2 1/16"  
[52mm]

1 3/8"  
[34mm]

**Product Specifications:**

3/4" Washdown Swivel & Thermo-Tee  
(Chrome Plated)

**Product Compliance:**

NSF 61 Exempt (Non-Potable)